

## the CONGRESSIONAL

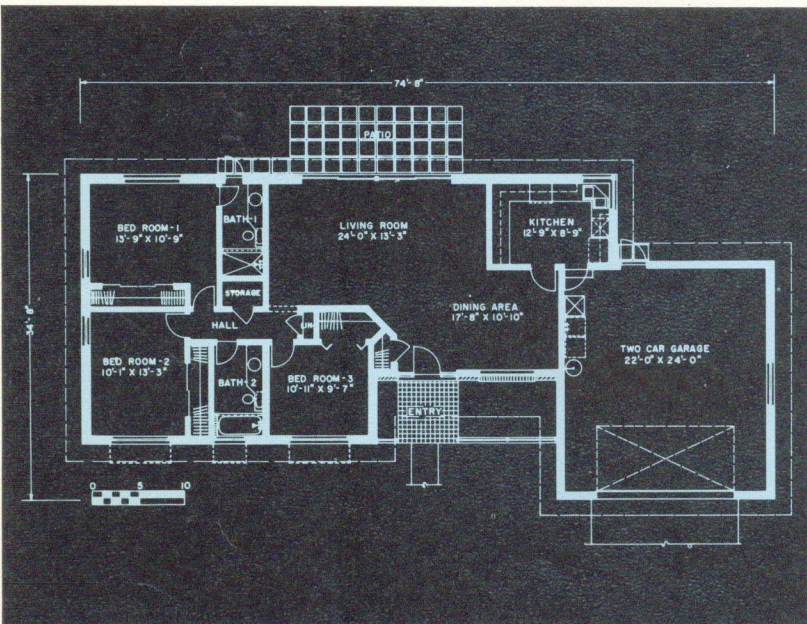
3 Bedrooms, 2 Baths, Patio, Double-car Garage

A courtyard entryway and startling double-pitched roof enhance the beauty of this luxurious tropic-island home.

**GENERAL FEATURES** Quarry tile and gray cement brick entry with ornamental iron railing; fixed plastic panels at front door; front Bermuda-type shutters; raised stucco band around garage door; sliding-glass doors to stepping-stone patio; front-door chimes; aluminum awning windows and screens; marble sills; terrazzo floors; silent electrical switches; circuit-breaker electric panel; central air-conditioning and heating; gas water heater; washer/dryer space; landscaping.

**KITCHEN** Double-compartment stainless steel sink with recess light; custom wood cabinets; laminated plastic counter tops; built-in dishwasher and disposal; built-in gas range with ductless hood and fan; stained wood ceiling strips.

**BATHROOMS** Ceramic-tile tub areas and floors; colored porcelain fixtures; custom wood vanities with laminated plastic tops; ceiling heaters; plywood arches and mirror wall in bath #1; ceiling cove mould in bath #2.



MACKLE-BUILT MEANS FUTURE SECURITY FOR YOU